

## **Hanscom Field Advisory Commission**

**Tuesday, July 21, 2020, 7-8 p.m.**

**Location: Virtual Meeting**

**Due to current public health concerns, this meeting will be conducted using the Zoom video platform & phone dial-in. To access the meeting from an Internet-connected computer, tablet or smartphone, click on this link:**

**<https://us02web.zoom.us/j/81136127794>**

**Meeting ID: 811 3612 7794**

**Dial-in: (646) 558-8656**

*The virtual meeting room will be open 30 minutes prior to the meeting. Attendees are encouraged to familiarize themselves with the platform prior to the formal meeting commencement at 7PM.*

### **Agenda**

1. Call to order
2. Announcements
3. Selection of HFAC Chairman
4. Spring, 2020 noise reports, presented by Massport
5. Capital projects, third-party development report, presented by Massport
6. Citizen comments
7. Minutes, Spring 2020
8. Next Meeting August 18, 2020 or September 15, 2020
9. Adjourn

## Summary of Monthly Noise Report Comparison of June 2020 to 2019

**Page 1:** The total number of 7 a.m. to 11 p.m. operations decreased 32.6% in June 2020, as compared to June 2019. Singles (including touch-and-goes) decreased 35.1% compared to June 2019. Turbo activity decreased 30.4% while Jet activity decreased 39.5%. Helicopter activity had a 0.4% increase in activity. Night activity decreased from 192 operations in June 2019, to 110 operations in June 2020.

**Page 2:** Civilian departure EXP, using the Aviation Environmental Design Tool (AEDT) Version 2d, was 105.1 decibels in June 2020.

**Pages 3a-c:** EXP using AEDT 2d calculations for June 2020 are on pages 3 a-c.

**Page 4:** The top graph provides a visual picture of the changes in departure EXP over the past 24 months, showing the ups and downs since June 2018 for civilian, military and total EXP. It demonstrates the wide variability in military departure EXP, which ranged from a new low of 75.1 dB (Jun 2018) to 110.2 dB (August 2019). Civilian departure EXP ranged between 106.3 dB (August 2018) to a low of 101.0 dB (June 2020). Beginning in Jan 2020, AEDT 2d is being used to calculate noise values. EXP 7.0c was used from 2017 to 2019 with EXP 6.1 used from 2000 to 2016.

The bottom graph indicates trends since June 2015, with each point on the graph representing the interval average for the previous 12 months. The military interval average decreased through mid-2015 till mid-2016, then increased through early 2018 and remained somewhat steady until a small decline at the end of 2018. A steady decrease occurred throughout 2019. The civilian interval average does not demonstrate the pronounced ups and downs seen in the military interval average, but it demonstrates an even trend in 2015, and a downward to level trend from 2016 through 2019. The strong drop-off in 2020 is related to the reduction in operations due to COVID-19.

**Page 5:** There was a decrease in noise disturbance reports from 301 in June 2019 to 142 in June 2020, made by 31 separate callers.

**Page 6:** In June 2020, when compared to June 2019, there was a decrease in DNL of 2.3 dB at Site 31 (Airfield), a decrease of 3.0 dB at Site 32 (Airfield), an increase of 0.5 dB at Site 33 (Lincoln), a decrease of 1.5 dB at Site 35 (Lexington) and a decrease of 1.0 dB at Site 36 (Concord). A comparison at Site 34 (Bedford) could not be made between 2020 and 2019 due to a site malfunction in 2019. There were three days with a DNL above 70 in June. All sites were 100% operational for the month of June. There was a low overall level of flight activity due to COVID-19 Virus and a low level of military activity in June.

**2020 - to - DATE PRELIMINARY REPORT**  
 (All data is reviewed for the Annual Noise Report--data for 2019-2020 may be adjusted.)

Prepared June 2020

**MONTHLY STATISTICS REPORT - HANSCOM FIELD**

2019 FROM FAA TOWER REPORTS & ESTIMATES (7 A.M.-11 P.M)								
	CIVILIAN						MILITARY	TOTAL
	LOCAL	SINGLES	TWIN PISTON	TURBO	JET	HELI		
January	2657	1414	207	481	2583	755	18	8,115
February	3140	1720	173	406	2500	723	33	8,695
March	3559	2229	237	488	2701	749	40	10,003
April	3179	1952	290	524	2622	773	99	9,439
May	4147	2987	389	743	2888	823	36	12,013
June	4282	3130	345	766	2733	784	42	12,082
July	5090	3701	354	794	2225	877	58	13,099
August	4759	3567	394	780	2368	847	62	12,777
September	4652	3598	310	777	2589	815	60	12,801
October	3242	2377	331	734	3187	848	64	10,783
November	3376	2398	296	621	2995	771	40	10,497
December	2524	1397	269	566	2821	777	23	8,377
<b>TOTAL</b>	<b>44,607</b>	<b>30,470</b>	<b>3,595</b>	<b>7,680</b>	<b>32,212</b>	<b>9,542</b>	<b>575</b>	<b>128,681</b>

Note: The 2019 figures are preliminary. All 2019 data will be reviewed before publication of the 2019 annual noise report.

2020 FROM FAA TOWER REPORTS & ESTIMATES (7 A.M.-11 P.M)								
	CIVILIAN						MILITARY	TOTAL
	LOCAL	SINGLES	TWIN PISTON	TURBO	JET	HELI		
January	3167	1704	232	523	2461	774	43	8,904
February	3124	1769	246	446	2569	715	58	8,927
March	2515	1371	253	369	2172	737	38	7,455
April	624	102	177	150	605	640	60	2,358
May	717	446	217	271	1167	776	58	3,652
June	2970	1841	338	533	1654	787	16	8,139
July	0	0	0	0	0	0	0	0
August	0	0	0	0	0	0	0	0
September	0	0	0	0	0	0	0	0
October	0	0	0	0	0	0	0	0
November	0	0	0	0	0	0	0	0
December	0	0	0	0	0	0	0	0
<b>TOTAL</b>	<b>13,117</b>	<b>7,233</b>	<b>1,463</b>	<b>2,292</b>	<b>10,628</b>	<b>4,429</b>	<b>273</b>	<b>39,435</b>

Note: The 2020 figures are preliminary. All 2020 data will be reviewed before publication of the 2020 annual noise report.

**NIGHT OPERATIONS (11 p.m.-7 a.m.)**

	2015	2016	2017	2018	2019	2020	2020 EXMPT
	(inc. exempt)	(inc. exempt)	(inc. exempt)	(inc. exempt)	(inc. exempt)	(inc. exempt)	
January	150	152	167	207	187	152	45
February	164	142	182	213	194	163	48
March	166	149	171	206	184	122	35
April	189	189	175	187	214	49	31
May	200	148	224	224	240	65	33
June	176	175	190	217	192	110	52
July	180	154	205	196	228	0	0
August	152	181	150	182	172	0	0
September	178	172	184	186	211	0	0
October	191	220	214	277	227	0	0
November	171	189	213	206	243	0	0
December	141	170	151	158	184	0	0
<b>TOTAL</b>	<b>2058</b>	<b>2041</b>	<b>2226</b>	<b>2459</b>	<b>2476</b>	<b>661</b>	<b>244</b>

Exempt includes: Medical emergency, FAA, CAP, military, & based operators with ATC, mechanical, or weather delays.

Note: 2017 night operations were adjusted during annual noise report review. 2018 night operations were adjusted prior to September HFAC meeting.

**NOISE DISTURBANCE REPORTS**

	2015	2016	2017	2018	2019	2020
January	14	55	24	30	67	228
February	14	28	33	29	58	246
March	22	23	22	35	147	165
April	30	23	43	29	221	62
May	56	34	46	64	228	54
June	36	73	99	58	301	142
July	39	29	60	56	197	
August	50	46	111	73	168	
September	61	39	58	70	214	
October	35	30	50	82	237	
November	37	27	40	59	259	
December	33	20	14	62	157	
<b>TOTAL-</b>	<b>427</b>	<b>427</b>	<b>600</b>	<b>647</b>	<b>2,254</b>	<b>897</b>

**CIVILIAN DEPARTURE EXP COMPARISON**

	2008	2009	2010	2011	2012	2013	2014
Jan.	109.6 dB	108.2 dB	109.6 dB	109.6 dB	107.8 dB	107.7 dB	107.6 dB
Feb.	111.5 dB	108.1 dB	108.9 dB	110.1 dB	109.5 dB	108.5 dB	108.3 dB
Mar.	110.8 dB	110.6 dB	109.5 dB	109.3 dB	109.5 dB	107.8 dB	108.0 dB
Apr.	110.8 dB	110.5 dB	110.3 dB	109.2 dB	109.2 dB	108.7 dB	108.1 dB
May	111.3 dB	109.9 dB	110.4 dB	109.6 dB	108.7 dB	108.4 dB	109.0 dB
June	110.8 dB	109.1 dB	109.3 dB	109.1 dB	108.6 dB	109.7 dB	108.0 dB
July	110.0 dB	109.1 dB	108.4 dB	108.2 dB	107.6 dB	108.3 dB	107.8 dB
Aug.	109.0 dB	108.4 dB	108.4 dB	108.5 dB	108.2 dB	108.3 dB	107.6 dB
Sept.	109.9 dB	108.9 dB	109.0 dB	110.2 dB	108.4 dB	108.6 dB	109.1 dB
Oct.	109.7 dB	109.0 dB	109.1 dB	108.6 dB	108.5 dB	109.4 dB	109.0 dB
Nov.	110.0 dB	108.9 dB	109.3 dB	108.8 dB	109.1 dB	108.6 dB	108.3 dB
Dec.	109.5 dB	109.1 dB	108.8 dB	107.5 dB	107.2 dB	108.7 dB	107.6 dB
ANNUAL EXP	110.2 dB	109.2 dB	109.3 dB	109.1 dB	108.5 dB	108.6 dB	108.2 dB
ANNUAL OPERATIONS	165,889	149,911	163,737	162,999	166,214	154,251	134,295

**CIVILIAN DEPARTURE EXP COMPARISON**

	2015	2016	2017	2018	2019	2020	2018-2019 Difference
Jan.	107.3 dB	107.9 dB	107.3 dB	106.8 dB*	106.7 dB*	106.2 dB*	-0.5
Feb.	107.8 dB	107.6 dB	107.6 dB	107.3 dB*	107.1 dB*	107.2 dB*	0.1
Mar.	108.1 dB	107.5 dB	107.7 dB	107.9 dB*	107.1 dB*	105.7 dB*	-1.4
Apr.	108.4 dB	107.7 dB	108.4 dB	107.2 dB*	107.5 dB*	101.0 dB*	-6.5
May	108.2 dB	107.8 dB	107.8 dB*	107.9 dB*	108.2 dB*	105.1 dB*	-3.2
June	108.1 dB	108.2 dB	107.8 dB*	107.6 dB*	108.1 dB*	105.1 dB*	-3.0
July	108.0 dB	106.8 dB	106.7 dB*	106.7 dB*	108.0 dB*	0.0 dB*	
Aug.	108.0 dB	107.5 dB	106.2 dB*	106.3 dB*	106.8 dB*	0.0 dB*	
Sept.	108.0 dB	108.1 dB	107.5 dB*	107.1 dB*	107.4 dB*	0.0 dB*	
Oct.	108.3 dB	108.2 dB	107.4 dB*	107.9 dB*	107.6 dB*	0.0 dB*	
Nov.	108.9 dB	108.7 dB	107.2 dB*	107.3 dB*	107.2 dB*	0.0 dB*	
Dec.	107.6 dB	107.7 dB	106.4 dB*	106.7 dB*	106.8 dB*	0.0 dB*	
ANNUAL EXP	108.0 dB	107.8 dB	107.3 dB	107.2 dB*	107.4 dB	105.0 dB	
ANNUAL OPERATIONS	128,249	122,027	128,598	121,661	128,681	39,435	

\* Beginning in Jan 2020, AEDT 2d is used to calculate SEL values

## EXP for 6/1/2020 through 6/30/2020

7/1/2020 5:31:15 PM

Group Number	Stage	Rep Type	Cat ID	Sector	Departures					Arrivals					Partial EXP
					SEL	Day	10 PM to 11 PM	11 PM to 7 AM	EXP	SEL	Day	10 PM to 11 PM	11 PM to 7 AM	EXP	
1	9	C525, C500, C501	J	CIV	87.10	1.40	0.03	0.20	92.82	85.50	1.30	0.07	0.27	92.16	95.51
2	9	C560	J	CIV	89.00	1.10	0.00	0.00	89.41	86.60	1.10	0.00	0.00	87.01	91.39
2M	9	UC-35 [MIL]	J	MIL	89.00	0.00	0.00	0.00	0.00	86.60	0.00	0.00	0.00	0.00	0.00
3	9	LJ35, LJ45, H25B, H25	J	CIV	91.10	3.93	0.03	0.20	99.07	88.20	3.93	0.07	0.17	96.17	100.87
3M	9	C-21 [MIL]	J	MIL	91.10	0.00	0.00	0.00	0.00	88.20	0.00	0.00	0.00	0.00	0.00
4	9	DA02	J	CIV	95.50	0.00	0.00	0.00	0.00	98.90	0.00	0.00	0.00	0.00	0.00
4M	9	HU25 [MIL]	J	MIL	95.50	0.00	0.00	0.00	0.00	98.90	0.00	0.00	0.00	0.00	0.00
5	9	LJ25, LJ24, H25A	J	CIV	104.90	0.00	0.00	0.00	0.00	99.80	0.00	0.00	0.00	0.00	0.00
5M	9	T-37, T38 [MIL]	J	MIL	104.90	0.00	0.00	0.00	0.00	99.80	0.00	0.00	0.00	0.00	0.00
6	9	BAC-111	J	CIV	96.10	0.00	0.00	0.00	0.00	99.90	0.00	0.00	0.00	0.00	0.00
7	9	GLF3	J	CIV	81.80	0.07	0.00	0.00	70.04	88.20	0.07	0.00	0.00	76.44	77.33
7M	9	GLF3 [MIL]	J	MIL	81.80	0.00	0.00	0.00	0.00	88.20	0.00	0.00	0.00	0.00	0.00
8	9	GLF4	J	CIV	81.80	1.47	0.03	0.07	85.72	88.20	1.43	0.10	0.03	92.62	93.43
8M	9	C20B, GLF4 [MIL]	J	MIL	81.80	0.00	0.00	0.00	0.00	88.20	0.00	0.00	0.00	0.00	0.00
9	9	CL30, CL60, CRJ1	J	CIV	86.60	3.97	0.03	0.10	93.84	87.60	3.97	0.03	0.10	94.84	97.38
10	9	CL61, CRJ2, CRJ7	J	CIV	84.30	0.50	0.00	0.03	83.51	88.40	0.47	0.03	0.03	88.94	90.04
11	9	Unknown/Misc. Jets	J	CIV	95.80	0.03	0.00	0.00	81.03	88.70	0.03	0.00	0.00	73.93	81.80
11M	9	Unknown/Misc. Jets [MI	J	MIL	100.20	0.00	0.00	0.00	0.00	92.20	0.00	0.00	0.00	0.00	0.00
13	9	C141 [MIL]-OBSOLETE	J	MIL	0.00	0.00	0.00	0.00	0.00	0.00	0.00	0.00	0.00	0.00	0.00
14	9	DC-9	J	CIV	94.60	0.00	0.00	0.00	0.00	92.30	0.00	0.00	0.00	0.00	0.00
14M	9	C9, T-43 [MIL]	J	MIL	99.20	0.00	0.00	0.00	0.00	94.20	0.00	0.00	0.00	0.00	0.00
15	9	B707-OBSOLETE	J	CIV	0.00	0.00	0.00	0.00	0.00	0.00	0.00	0.00	0.00	0.00	0.00
15M	9	C-5A, KC-135 [MIL]	J	MIL	103.50	0.00	0.00	0.00	0.00	107.80	0.00	0.00	0.00	0.00	0.00
17	9	Helicopters	H	CIV	83.50	13.10	0.10	0.43	96.16	87.90	12.90	0.13	0.60	100.96	102.20
17M	9	Helicopters [MIL]	H	MIL	89.40	0.00	0.00	0.00	0.00	89.20	0.00	0.00	0.00	0.00	0.00
18	9	C130, Hvy Turboprops	T	CIV	92.50	0.00	0.00	0.00	0.00	95.80	0.00	0.00	0.00	0.00	0.00
18M	9	C130, P3 [MIL]	T	MIL	92.50	0.00	0.00	0.00	0.00	95.80	0.00	0.00	0.00	0.00	0.00
19	9	C441, Twin Turboprops	T	CIV	75.30	0.65	0.00	0.03	75.23	84.10	0.62	0.00	0.07	85.18	85.60
19M	9	C12 [MIL turboprops]	T	MIL	75.30	0.03	0.00	0.00	60.53	84.10	0.03	0.00	0.00	69.33	69.87
20	9	Twin-engine Piston	W	CIV	82.70	5.62	0.00	0.03	90.45	85.90	5.62	0.03	0.00	93.65	95.34

## EXP for 6/1/2020 through 6/30/2020

7/1/2020 5:31:15 PM

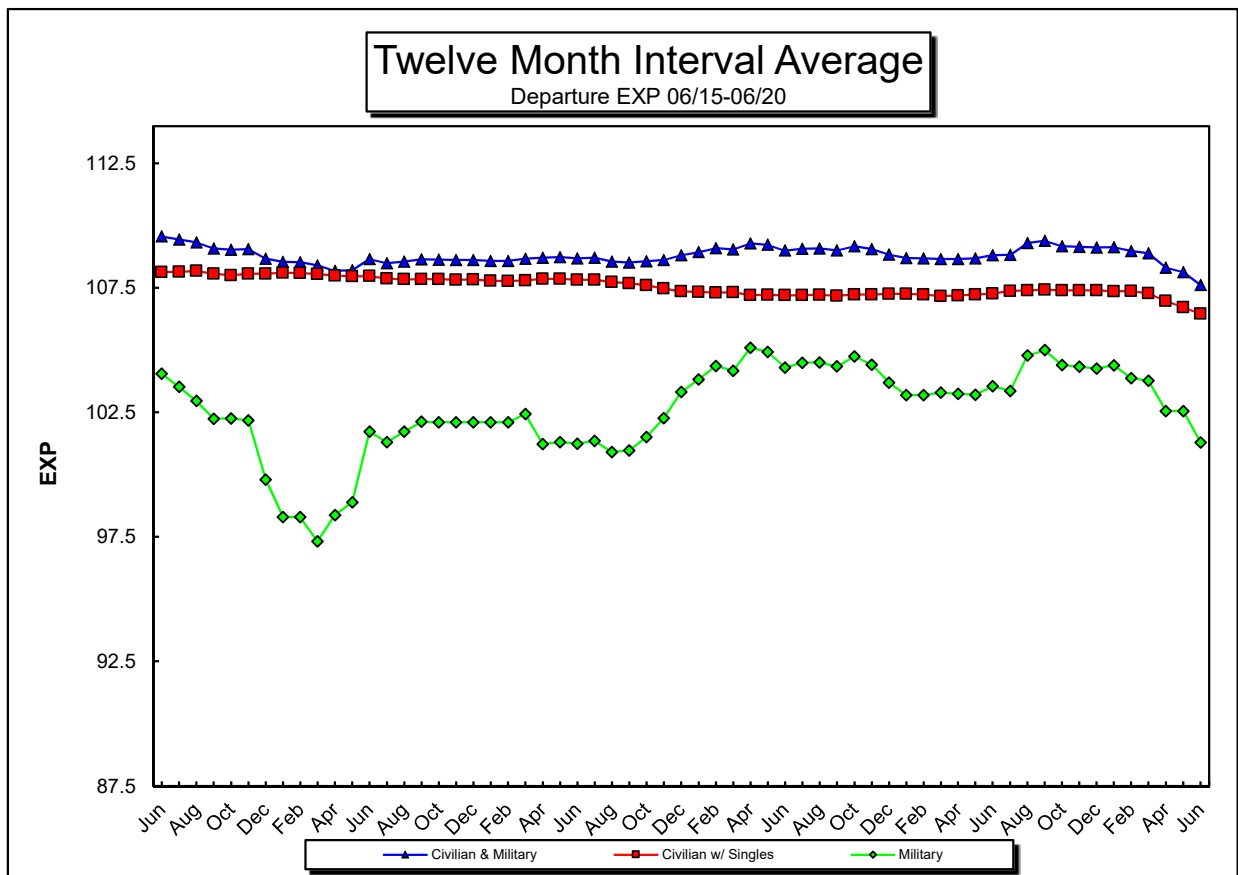
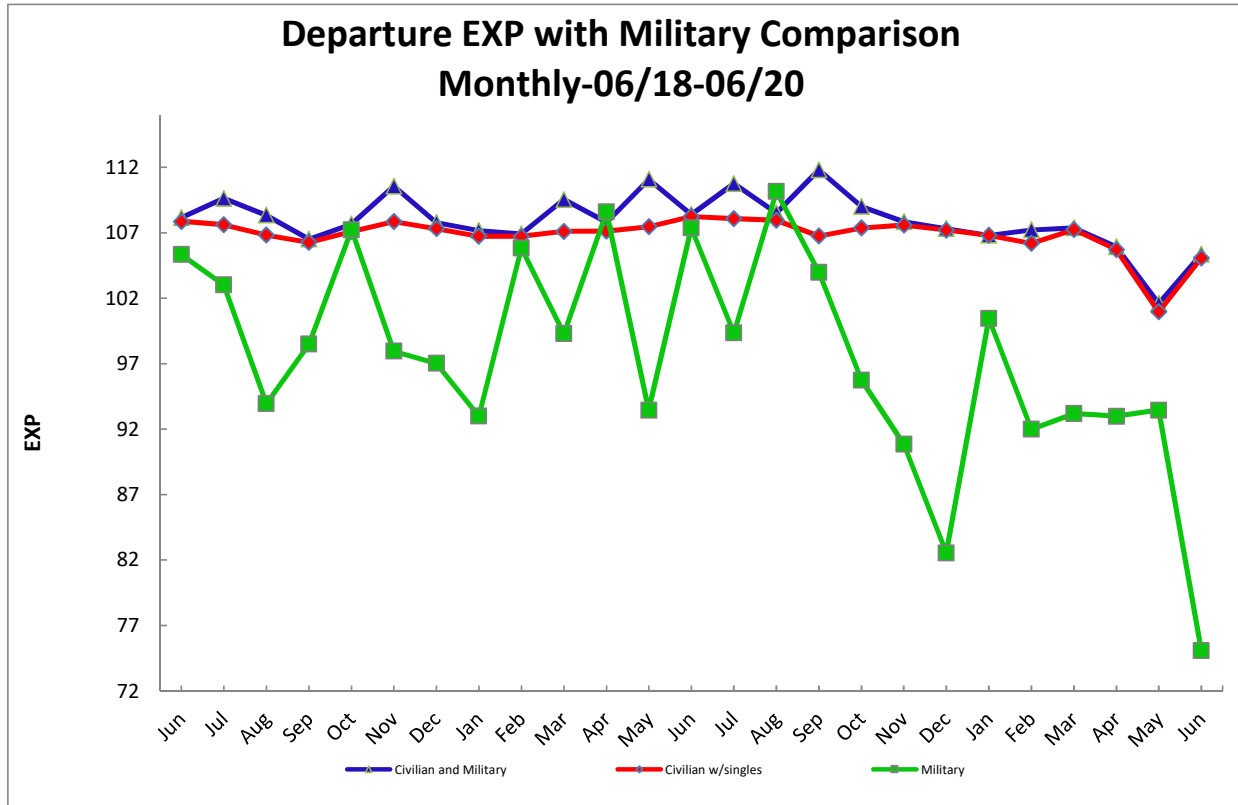
Group Number	Stage	Rep Type	Cat ID	Sector	Departures					Arrivals					Partial EXP
					SEL	Day	10 PM to 11 PM	11 PM to 7 AM	EXP	SEL	Day	10 PM to 11 PM	11 PM to 7 AM	EXP	
20M	9	Twin-engine Piston [MIL	W	MIL	82.70	0.00	0.00	0.00	0.00	85.90	0.00	0.00	0.00	0.00	0.00
21	9	SINGLES (includes local	S	CIV	78.90	85.33	0.00	0.33	98.38	81.90	85.40	0.20	0.07	101.35	103.12
21M	9	SINGLES [MIL]	S	MIL	78.90	0.40	0.00	0.00	74.92	81.90	0.40	0.00	0.00	77.92	79.68
22	9	ASTR, G150, G280, W	J	CIV	90.80	0.27	0.00	0.00	85.06	84.80	0.27	0.00	0.00	79.06	86.03
24	9	A10, EA6, F16 etc. [MIL]	J	MIL	116.00	0.00	0.00	0.00	0.00	93.40	0.00	0.00	0.00	0.00	0.00
25	9	C650	J	CIV	88.60	0.20	0.00	0.00	81.61	84.90	0.17	0.00	0.03	81.89	84.76
26	9	F2TH, F900, FA50, FA7	J	CIV	81.70	1.83	0.07	0.00	85.68	92.30	1.73	0.10	0.07	97.61	97.88
28M	9	DC3 [MIL]	W	MIL	94.80	0.00	0.00	0.00	0.00	98.10	0.00	0.00	0.00	0.00	0.00
29	9	B190, E120, D238	T	CIV	76.50	0.00	0.00	0.00	0.00	89.60	0.00	0.00	0.00	0.00	0.00
30	9	SF34	T	CIV	77.30	0.00	0.00	0.00	0.00	86.20	0.00	0.00	0.00	0.00	0.00
31	9	B727-ST2-OBSOLETE	J	CIV	0.00	0.00	0.00	0.00	0.00	0.00	0.00	0.00	0.00	0.00	0.00
32	9	B727-ST3	J	CIV	103.40	0.00	0.00	0.00	0.00	97.00	0.00	0.00	0.00	0.00	0.00
33	9	BE20, BE30, DHC6, SW	T	CIV	82.10	2.97	0.00	0.03	87.29	93.50	2.93	0.03	0.03	99.06	99.34
34	9	B737 Hushkit	J	CIV	95.50	0.00	0.00	0.00	0.00	93.80	0.00	0.00	0.00	0.00	0.00
35	9	DH8	J	CIV	70.70	0.00	0.00	0.00	0.00	82.80	0.00	0.00	0.00	0.00	0.00
36	9	A319, A320, A321	J	CIV	86.90	0.03	0.00	0.00	72.13	93.10	0.03	0.00	0.00	78.33	79.26
37	9	GLF5, GLF6	J	CIV	86.20	0.97	0.00	0.00	86.05	88.70	0.93	0.00	0.03	89.73	91.28
37M	9	C37, GLF5 [MIL]	J	MIL	86.20	0.00	0.00	0.00	0.00	88.70	0.00	0.00	0.00	0.00	0.00
39	9	GLF2	J	CIV	97.10	0.00	0.00	0.00	0.00	92.70	0.00	0.00	0.00	0.00	0.00
40	9	C750, GALX, HA4T, J32	J	CIV	81.70	2.27	0.03	0.03	86.37	92.30	2.20	0.07	0.07	97.78	98.09
41	9	B737	J	CIV	89.50	0.00	0.00	0.00	0.00	94.40	0.00	0.00	0.00	0.00	0.00
42	9	B757	J	CIV	88.20	0.00	0.00	0.00	0.00	93.40	0.00	0.00	0.00	0.00	0.00
43	9	C550, E55P, PRM1	V	CIV	83.00	1.93	0.00	0.13	88.14	90.00	2.07	0.00	0.00	93.15	94.34
44	9	C56X	J	CIV	81.40	3.27	0.00	0.03	86.96	91.20	3.20	0.07	0.03	97.43	97.81
45	9	BE40, MU30	J	CIV	91.70	0.97	0.00	0.00	91.55	87.10	0.97	0.00	0.00	86.95	92.85
46	9	C680	J	CIV	84.60	1.67	0.13	0.03	89.83	88.20	1.80	0.03	0.00	91.49	93.75
47	9	E135, E145	J	CIV	79.70	0.07	0.00	0.00	67.94	89.30	0.07	0.00	0.00	77.54	77.99
48	9	BD70, GL5T, GLEX	J	CIV	78.90	1.07	0.00	0.00	79.18	90.10	1.07	0.00	0.00	90.38	90.70
49	9	C510, E500, E50P	V	CIV	82.90	0.07	0.00	0.00	71.14	85.70	0.07	0.00	0.00	73.94	75.77
50	9	EA50	V	CIV	74.50	0.13	0.00	0.00	65.75	79.00	0.13	0.00	0.00	70.25	71.57

**EXP for 6/1/2020 through 6/30/2020**

7/1/2020 5:31:15 PM

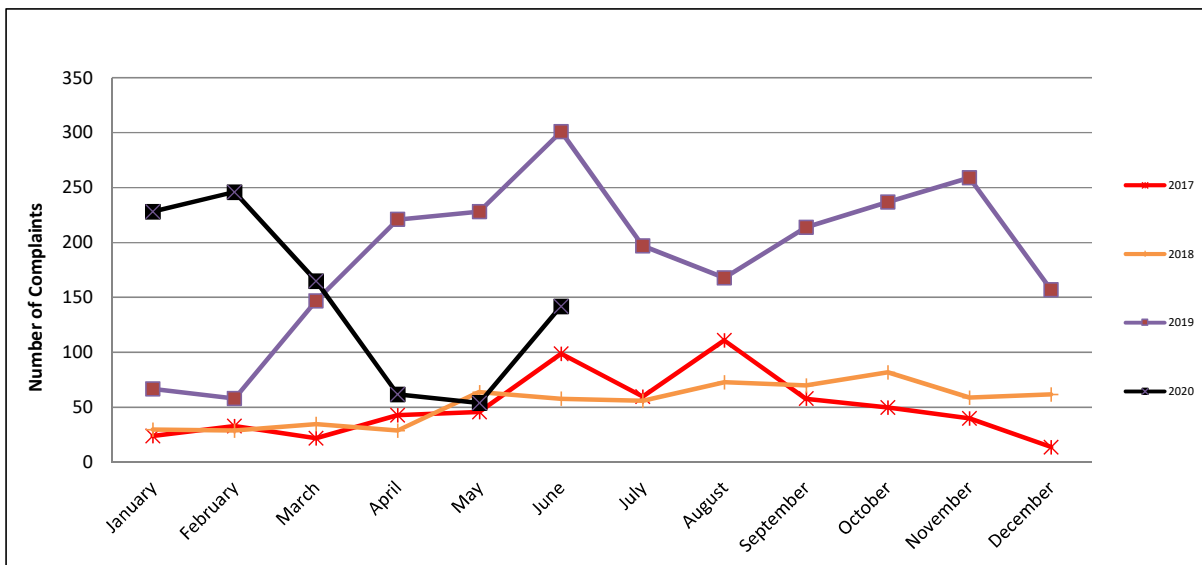
Group Number	Stage	Rep Type	Cat ID	Sector	Departures				Arrivals				Partial EXP		
					SEL	Day	10 PM to 11 PM	11 PM to 7 AM	EXP	SEL	Day	10 PM to 11 PM		11 PM to 7 AM	EXP
<b>Civil Aircraft-Excluding Singles</b>						49.53	0.47	1.37	104.01		49.07	0.77	1.53	107.70	109.25
<b>Civil Aircraft</b>						134.87	0.47	1.70	105.06		134.47	0.97	1.60	108.61	110.19
<b>Military Aircraft</b>						0.43	0.00	0.00	75.08		0.43	0.00	0.00	78.48	80.12
<b>All Aircraft- Excluding Singles</b>						49.57	0.47	1.37	104.01		49.10	0.77	1.53	107.70	109.25
<b>All Aircraft</b>						135.30	0.47	1.70	105.06		134.90	0.97	1.60	108.61	110.20
						<b>Local</b>	<b>Single</b>	<b>Twin</b>	<b>Turbo</b>	<b>Jet</b>	<b>V Jet</b>	<b>Heli</b>	<b>Mil</b>	<b>Total</b>	
<b>Total Operations</b>						2,970	1,841	338	533	1,605	49	787	16	8,139	

\* The value for singles does not include local flights





NOISE DISTURBANCE REPORTS					June Complaints	
	2017	2018	2019	2020	Individuals	Multiples
January	24	30	67	228	Resident 1-2	42
February	33	29	58	246	Resident 3	20
March	22	35	147	165	Resident 4	14
April	43	29	221	62	Resident 5	9
May	46	64	228	54	Resident 6	6
June	99	58	301	142	Resident 7	5
July	60	56	197		Resident 8-9	8
August	111	73	168		Resident 10-14	15
September	58	70	214		Resident 15-20	12
October	50	82	237		Resident 21-31	11
November	40	59	259			
December	14	62	157			
TOTAL-to-date				897	TOTAL	31
					Multiples:	92%
					<b>City</b>	<b>Number of Callers</b>
					Ayer	2
					Bedford	4
					Cambridge	1
					Carlisle	1
					Chemsford	1
					Concord	4
					Groton	1
					Lexington	4
					Lincoln	11
					Needham	1
					Winchester	1
					Totals:	31





## Projects & Third Party Development Report

July 2020

Updated or new items appear in **bold** text.

Project	Status
Hangar 12 RFP	December 2018: The existing lease for Hangar 12 expires on November 17, 2019. Massport expects to issue an Request For Proposals (RFP) in the first quarter of 2019. The hangar is approximately 14,500 sq. ft and is currently occupied by Nagle Aviation. June 2019: Massport expects to issue an RFP in summer 2019. July 2019: The RFP was released on July 12, and the bid close date is August 23. September 2019: Proposals are currently under review. October 2019: The RFP process is closed.
2019 Vegetation Management Plan Update	September 2017: In preparation for the next VMP Update, photogrammetry will be performed in the fall of 2017. October 2017: Photogrammetry has been completed. September 2018: Massport and the VMP Consultant will meet to review the photogrammetry in October. October 2018: The photogrammetry findings have been reviewed and a plan is being developed. May 2019: Massport plans to work with the local Conservation Commissions in June to finalize the updated plan. July 2019: Massport will work with the Local Conservation Commissions in August and September to finalize the plan. September 2019: Meetings with Local Conservation Commissions are taking place over September and October, and letters will be sent out to affected abutters. October 2019: Abutter letters have been sent. Conservation Commission meetings are ongoing. December 2019: Orders of Conditions have been issued by three towns. February 2020: Vegetation Management will begin near the Runway 11 end in early March. April 2020: The work at the Runway 11 end has been completed. June 2020: Vegetation Management work will resume in July. <b>July 2020: Vegetation Management will continue in summer 2020.</b>
Salt Storage Shed Relocation	February 2019: At the request of the Lincoln Conservation Commission, Massport is in the design phases of relocating the Landside salt storage shed from the Civil Air Terminal Parking Lot. Massport has met with The Town of Lincoln Conservation Commission to site the new location. Construction of the new storage area is anticipated for the fall 2019. July 2019: Massport anticipates meeting with the Lincoln Conservation Commission in August. September 2019: The design is being finalized in preparation to bid the project. April 2020: This project is on hold due to COVID-19. <b>July 2020: The project is on hold awaiting funding. The Lincoln Conservation Commission has issued an order of conditions for the project.</b>
Electric Vehicle Charging Stations	October 2019: Massport has begun planning to add electric vehicle charging stations to the terminal employee lot.

